

42 Month Alcohol Treatment Data

Multiple DWI Offenders Treated With MRT Show Lower Recidivism Rates

In February 1992 the 42 month followup recidivism data was collected on multiple DWI offenders treated with MRT and untreated controls. Results showed that after 42 months of release, 40% of controls (n=65) had been reincarcerated for some time (including misdemeanor and felony offenses). 115 inmates treated with MRT during their incarceration at the Shelby County Correction Center's Alcohol Treatment Unit (ATU) showed a reincarceration rate of 31.3% over the same period. An additional group of 24 inmates participated in CCI's aftercare program where they continued the MRT treatment they began during their incarceration time. The CCI-treated group showed a reincarceration rate of 25%.

Figure 1 shows these data along with our findings at the 18 and 30 month periods. A chi-squared analysis on these data showed that these results are significant at the .07 level ($\chi = 2.26$, $df = 2$, one-tailed). That is, that there is a 7% probability the results are due to chance.

CCI will release a major report on these groups at the time they have been released for 5 years. Major reviews on the treatment of multiple

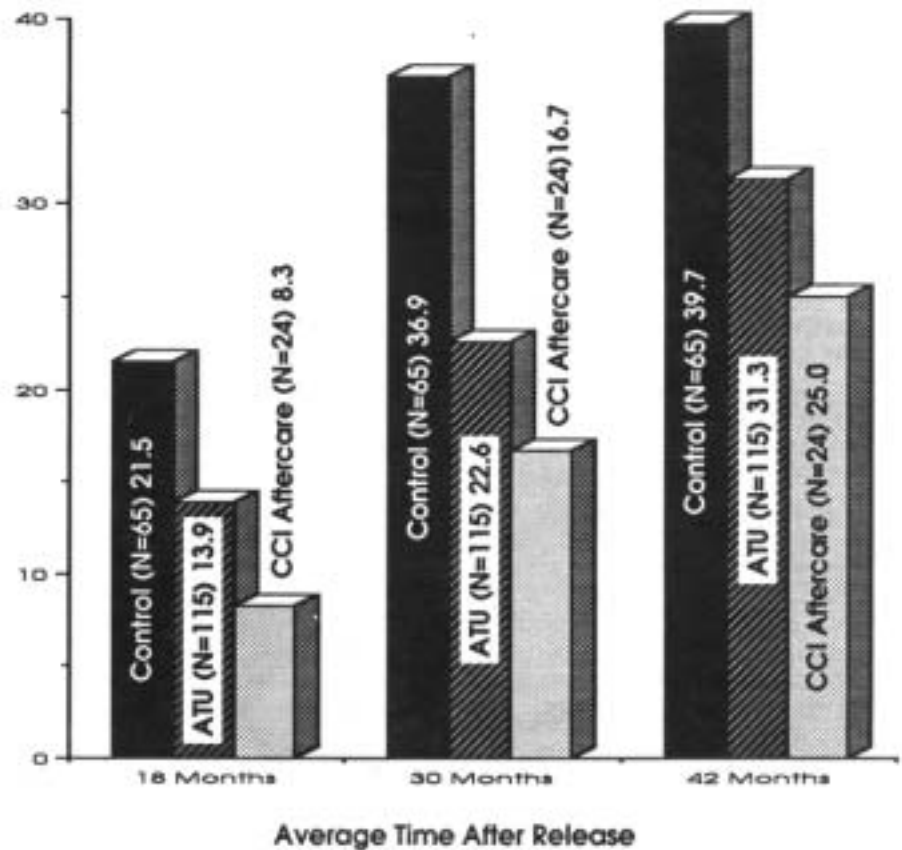


FIGURE 1
Reincarceration Rates for Male DWI Offenders

DWI offenders have been consistent in the finding that no treatment (as of yet) has shown significant differences between treatment and controls after 5 years of release for multiple DWI offenders.